

Capital Works Project Bulletin No. 1

SIR ROBERT MENZIES RESERVE, MALVERN RETAINING WALL RECONSTRUCTION WORKS



23 December 2020

The City of Stonnington's Engineering Projects unit wishes to advise residents that the reconstruction of the retaining wall along the southern end of Sir Robert Menzies Reserve, Malvern is scheduled to commence the week of **Monday 18 January 2021**.

The works are important to ensure the structural integrity of the wall. These types of works are best suited for this time of the year due to the lower chance of rainfall which can increase the risk of the project.

The civil works will be undertaken by Entracon Civil Pty Ltd and will include:

- Removal of elements of the existing retaining walls
- Construction of a new two-tiered concrete precast retaining wall including bored piers
- Removal of five trees located in the retaining wall
- Associated reinstatement works.

Due to site constraints, construction vehicles will be accessing the site from the northern Elizabeth Street end. A track path will be created with temporary fencing to separate vehicles from park users to ensure safety requirements are met. To protect the surface, track mats will be used.

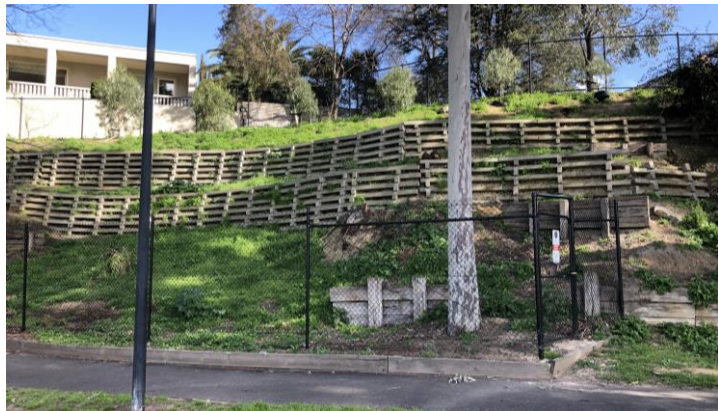
Working hours are **7am to 5pm** Monday to Friday.

The landscape components of the works are in development and consultation regarding this will occur at a later stage.

The contractor Entracon Civil and the City Of Stonnington Council will endeavour to minimise disruption at all times. However, some inconveniences are unavoidable during the construction period. We appreciate your patience and cooperation during these works.

Yours sincerely,

Engineering Projects



Contact for onsite issues:

Entracon Civil Pty Ltd

Nick Sinclair

M: 0439 702 780

Council Project Manager

Vincent Pham

Ph: 8290 3556 M: 0418 360 511

Out of Hours – Emergency Contact

Ph: 8290 1333

Project Information

Start Date

18 January 2021

Anticipated Completion

Late-June 2021

*Subject to weather conditions

FAQ:

Q. Will the playground be affected?

Yes. The playground will remain open during most of the works. However there will be stages where machinery may be very close to the playground. During these occasions the playground will be shut down for safety reasons.

Q. Will "Pedestrian Access" be affected?

Yes. While most of the reserve's pathways will remain open, the section in front of the retaining wall between the playground to Elizabeth Street will be closed for safety and reasons. The southern Elizabeth Street entrance into the reserve will be closed. The northern Elizabeth Street entrance will remain open, though please be aware of vehicle movements and adhere to any traffic management devices or instructions from the contractor.

Q. Will on-street parking be affected?

Yes. Some on-street parking spaces at the front of No.76 Elizabeth Street may be temporarily lost to allow for construction vehicles to turn into the reserve. To expedite the works, residents are requested not to park here during working hours.



LOCALITY PLAN (NOT TO SCALE)

Sir Robert Menzies Reserve, Malvern



Multilingual Information Call the Stonnington Community Link. A multilingual telephone information service.

General Enquiries	8290 1333	Greek	Ελληνικά	9280 0732	Russian	Русский	9280 0735
Mandarin	普通話 9280 0730	Italian	Italiano	9280 0733	Indonesian	Bahasa Indonesia	9280 0737
Cantonese	廣東話 9280 0731	Polish	Polski	9280 0734	All other languages		9280 0736

PO Box 21, Prahran Victoria 3181
 T 8290 1333 F 9521 2255
 council@stonnington.vic.gov.au
STONNINGTON.VIC.GOV.AU

Service Centres

311 Glenferrie Road, Malvern
 Cnr Chapel and Greville Streets, Prahran
 293 Tooronga Road, Malvern

