

How can I pay my rates?

Rates are to be paid either

- » **in full** – by 15 February 2024
- » **instalments** – due 30 September 2023, 30 November 2023, 28 February 2024 and 31 May 2024

Have you got a question or having difficulty paying your rates?

Please contact us immediately to discuss payment options and hardship provisions:

- ☎ 8290 1333
- @ council@stonnington.vic.gov.au
- 🌐 stonnington.vic.gov.au/rates

Concessions

State Government rebates are available to ratepayers who are holders of some concession cards for your place of residence. Visit stonnington.vic.gov.au/rates or call **8290 1333** for details about this.

Get your rates notices electronically

There are several ways you can receive your rates notices electronically, including email, bulk notices, accounting software or BPAY View. Visit stonnington.vic.gov.au/rates to register.

Objecting to your property valuation

If you disagree with your valuation you can object to it within two months of the date of service of rates notice. All objections are reviewed with a decision made by the Valuer-General Victoria (Victorian Government).

Visit stonnington.vic.gov.au/rates for details.

Put Council services in your pocket with MyStonnington

Download our free app to access useful information such as bin collection day notifications, latest news and library services, all at the touch of a button.

SCAN TO
SUBSCRIBE



How your rates are calculated



The rate in the dollar is calculated by dividing the total general rate revenue required to provide services by the total value (CIV) of all rateable properties in Stonnington.

How much is Council allowed to collect?

The Victorian Government has determined a rate cap of 3.5% this year, this means councils can only increase the average amount of general rates collected by 3.5%.

The waste services charge includes the cost of all waste services, including kerbside collection of both waste and recycling material. The charge accounts for all waste disposal costs including the State Government Landfill Levy and associated gate fees. Furthermore, it covers essential services like street cleaning, the disposal of hard waste items, and the management of litter. The main factors driving these changes are the Victorian Government's landfill levy charges, contract costs for FOGO green waste disposal and recycling collection and processing and also the implementation of the Victorian Government directed bid lid colour changeover (costing \$4.2 million).

The **fire services property levy** is a Victorian Government charge collected by councils on their behalf to help fund Victoria's fire and emergency services service.

Why do some people rates go up while other's go down?

Your rates could increase by more or less than someone you live near because rates are affected by changes in the capital improved value of your property.

Have your say and help shape our community

Visit connectstonnington.vic.gov.au to join the conversation and tell us what matters to you. You can also register to receive regular updates on new projects.

SCAN TO HAVE
YOUR SAY



Contact us

- ☎ **8290 1333**
- ✉ PO Box 58, Malvern Victoria 3144
- @ council@stonnington.vic.gov.au

Visit us

- 🌐 stonnington.vic.gov.au
- 📍 **Stonnington City Centre**
311 Glenferrie Road, Malvern

Connect with us

- f facebook.com/stonningtoncouncil
- t twitter.com/StonningtonNews
- @ instagram.com/whats_on_stonnington
- in linkedin.com/company/city-of-stonnington

Hearing or speech impairment

We are a national relay service friendly organisation. If you are deaf or have a hearing or speech impairment, contact us through the National Relay Service (NRS):

- » **TTY** users call **133 677**, then ask for **8290 1333**
- » **Speak and listen** users, call **1300 555 727**, then ask for **8290 1333**
- » **Internet relay** users, connect to the NRS, then ask for **8290 1333**

Community languages

Call the Stonnington Community Link, a multilingual telephone information service.

Mandarin	普通話	9280 0730	Polish	Polski	9280 0734
Cantonese	廣東話	9280 0731	Russia	Русский	9280 0735
Greek	Ελληνικά	9280 0732	Indonesian	Bahasa Indonesia	9280 0737
Italian	Italiano	9280 0733	Vietnamese	Tiếng Việt	9280 0748
All other languages		9280 0736			



Your rates explained 2023–24



Message from the Mayor

Delivering on the priorities you helped us identify is the focus of this year's Council budget.

We received hundreds of submissions from residents during the budget process and I want to thank everyone who helped us frame our plans for 2023–24.

We've listened to your feedback and are focussing on what's important to you: parks and open space, roads and drainage, streetscapes and amenity, community services and facilities, active transport and waste services.

This year's budget delivers \$64.89 million in new infrastructure projects while ensuring you continue to pay some of the lowest rates in Victoria.

Finalising this year's budget was challenging due to the economic environment. Prudent financial management has always been our priority and we are one of the few councils in Victoria that will have a surplus this year.

I'm pleased we'll be delivering a number of major projects including the new sports centre at the Percy Treyvaud Memorial Park (\$5.5 million), a new vision for Toorak Village with streetscape improvements (\$6.50 million) and continuing work on the Chapel Street masterplan (\$2.49 million including carryover).

We're investing in technology so it will be easier for ratepayers to interact with Council (\$15.95 million including carryover) and continuing to implement our Climate Emergency Action Plan (\$1.96 million).

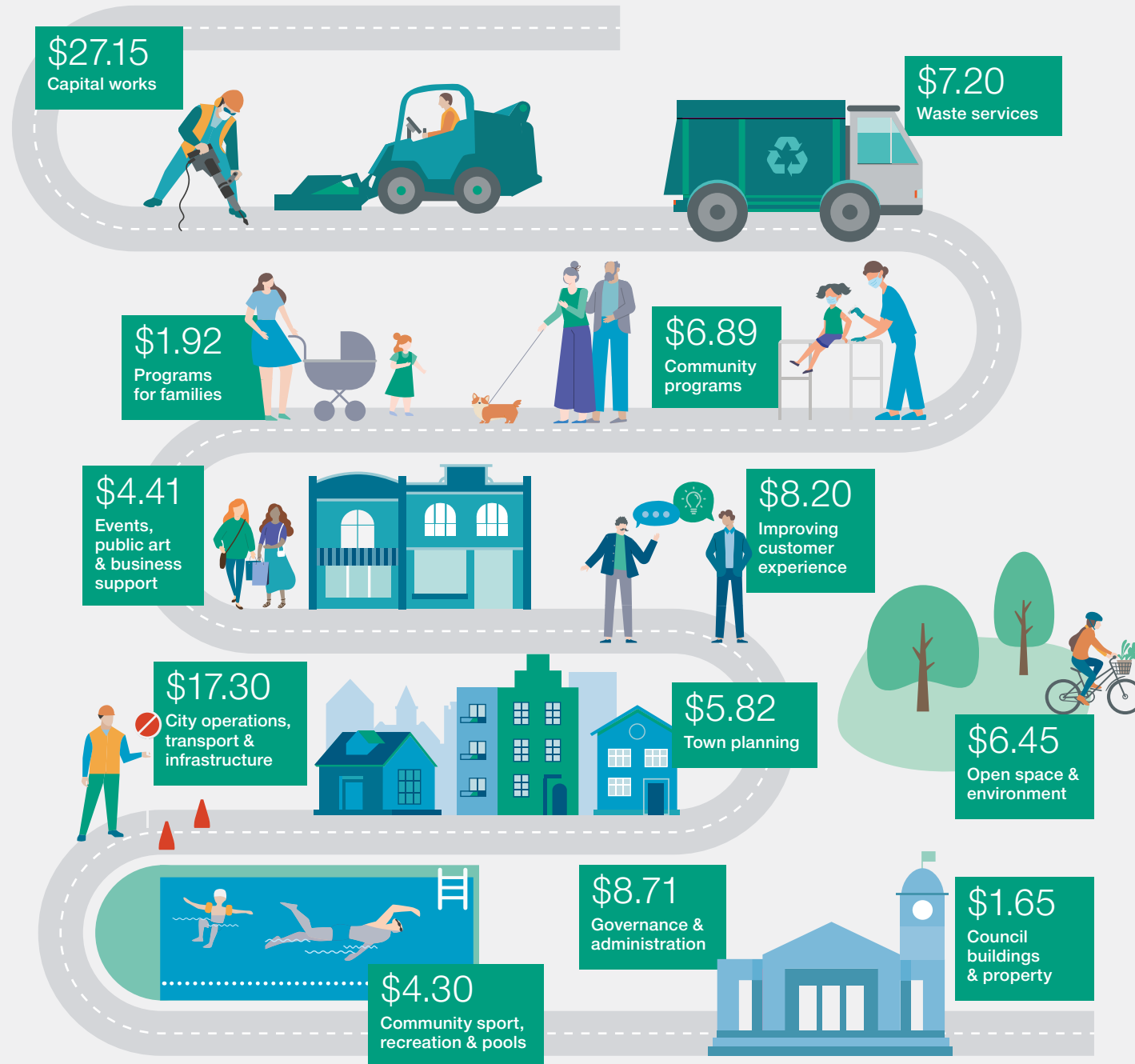
We are also presenting an exciting program of free and ticketed events this year, including our popular Carols by Candlelight concerts, the Glow Winter Arts Festival and Pets in the Park. I hope to see you there.

This brochure includes information on how your rates are calculated, how you can pay them and what they go towards. You can also visit stonnington.vic.gov.au to learn more about what your Council is delivering for our community.



Cr Jami Klisaris
Mayor, City of Stonnington

Where do my rates go? For every \$100 we spend:



Spotlight for building on sport and play

The next 12-months will see the completion of a number of major capital works projects after years of planning, community engagement, design and construction.

The multi-purpose sports facility at Percy Treyvaud Memorial Park will open within the next few months, bringing to a close the city's biggest ever investment in community sport that began in 2015 when the site was identified as the best location for a high-ball stadium.

When the doors finally open we'll see the return of the lawn bowls, tennis, lacrosse, cricket and recreation clubs and welcome newcomers Stonnington City Netball Association to the four-court Margaret Connellan Stadium.

Further west in Armadale, construction of Toorak Park pavilion will continue throughout the year with the new build expected to open in late-2024. The pavilion is the third and final stage of the Toorak Park/Victory Square masterplan that, to date, has delivered new parklands, a playground and cricket practice nets facility. This final stage will see the sports oval redeveloped and enlarged, new floodlights, improved spectator areas and the new fully-accessible sports pavilion.

A Stonnington landmark is also up for a full makeover this year, with the redevelopment of the Prahran skate park and basketball court in full swing until March 2024. The park will be transformed into a modern skate plaza with elements to challenge skaters of all abilities and, as a nod to the past, the iconic vert ramp is being retained and will take pride of place within the revamped park. The basketball court is also being rebuilt to contemporary standards and the whole space will be dotted with seating, shelters, shade trees and garden beds.

Two new fully-accessible playgrounds will also open later this year, at Sir Zelman Cowen Park in Kooyong and Central Park, Malvern East. They will be Stonnington's first ever fully-accessible playgrounds fitted out with equipment and sensory play experiences to suit people of all abilities, plus accessible amenities and areas for families to sit and enjoy a day at the park.

For more on these and other major works in Stonnington visit stonnington.vic.gov.au/majorworks