

Legend

	Site works boundary
	Extent of existing courts to be demolished
	Existing trees
	Proposed trees
	Existing trees to be removed
	Proposed shrubs
	Planting bed
	Grass area
	Granite paving
	Asphalt paving
	Honed aggregate concrete paving
	Sports court surface
	New perimeter court fence
	New retractable nets
	Seating
	New court light

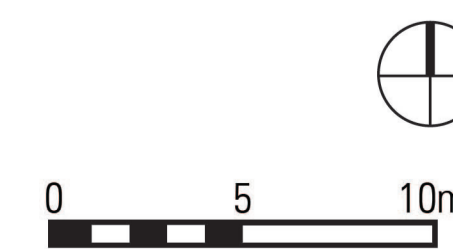
Key Objectives

- 1 Upgrade the three existing courts to provide 3 x compliant tennis courts, 2 x compliant netball courts and 2 x compliant futsal courts; with new court surface and linemarking, nets, hoops, fencing, gates, retractable nets, and floodlights.
- 2 Complete section of main path with infill granite pavers (east of courts).
- 3 Provide new gate access to each court from the path south of the courts and one to the north aligning with the existing path.
- 4 Clear and upgrade existing planting to open sightlines and remove visual and physical clutter, including replacement of garden beds with lawn area.
- 5 New tree planting along western court interface; and new shrub planting along southern facade of Rechabite Hall.
- 6 Extend court area and perimeter fence to building interface, removing existing asphalt path and underutilised secluded space.
- 7 Low level garden bed planting to perimeter of courts.



PRINCES GARDENS, PRAHRAN

Sports Courts
Landscape Concept Plan



Project Ref: 15.663
Dwg No.: 001
Scale: 1:200 @A1
Date: 11/02/2021
Revision: D

hansen partnership pty ltd
melbourne | vietnam
level 4 136 exhibition st
melbourne vic 3000
t 61 3 9654 8844 f 61 3 9654 8088
e info@hansenpartnership.com.au
w www.hansenpartnership.com.au