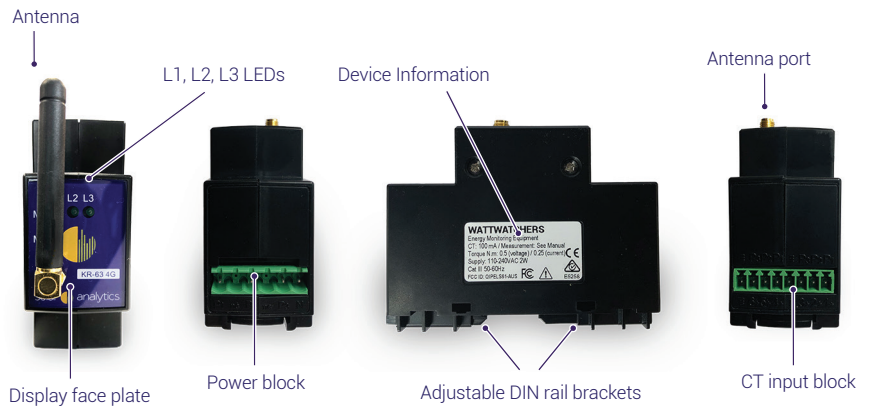


# Solar Smart Monitor KR-63



solar analytics



The hardware needed for a subscription to Solar Analytics Monitoring.

## Features

- ✓ Install in less than 15 min (typical residential site)
- ✓ Bundled with 3 CTs or 6 CTs
- ✓ 5 second to 5 minute measurement and reporting on each of 3 or 6 circuits
- ✓ 1% Revenue Grade Accuracy
- ✓ 5 year warranty
- ✓ Small 35mm wide (2 pole) DIN rail mount
- ✓ Suitable for single, two and three phase
- ✓ Compatible with all solar PV systems and inverters
- ✓ Solar PV and/or AC load consumption data
- ✓ Unlimited devices per site

## Typical Configuration

Single Phase Configuration:



For a typical single phase application the KR-63 will monitor the solar PV plus whole site mains and four other household load circuits e.g. air con, hot water.

Three Phase Configuration:



For a typical three phase application one KR-63 will monitor all three incoming phases of the solar PV system along with whole site mains circuits.

## Installation

- Plug and play installation
- Install in less than 15 minutes (typical residential site)
- Comes with a pre-wired easy fit power block terminal (for 1 or 3 phase)
- Easy line wiring diagrams provided with each kit
- Online registration and commissioning with a subscription.
- Help available via our Support Page and Steps to Installation video
- Business hours live support available from Solar Analytics 1300 651 137

# Hardware Specifications

## Electrical Characteristics

Measurement configuration	Voltage Current Mode	1,2 or 3 phase (Neutral required) CT Fundamental only/all harmonics
Measurement accuracy	Current and voltage Power Frequency Power factor Active energy Reactive energy	0.5% of reading Real power: 1% of reading from pf 0.8 leading to 0.5 lagging; Reactive power: 2% below 0.5 lagging 200ppm 2% from 0.8 leading to 0.5 lagging Class 1 as defined by IEC 62053-21 Class 2 as defined by IEC 62053-23
Input-voltage characteristics	Measured voltage Permissible overload	50 to 280 V AC 1.15Un
Input-current characteristics	Standard CT ratings Internal burden Turns ratio Permissible overload	60A(10mm) 120A(16mm) 400A(25mm) 600A(35mm) 2.7 ohm Adjusted to suit CT; field updateable 300 mA continuous
Internal power	CT Connections	0.6 W Single Phase (P1) Not isolated (neutral referenced)

## Mechanical Characteristics

Weight	0.3 kg
IP degree of protection	IP50 (front display) (higher in cabinet)
Dimensions	35 x 90 x 66 (mm) (2 pole)
Connection	Voltage Current: 3 meter version
	6 positions / 4 connections 5.08 mm pitch FCI part 20020007-H061B01LF 6-way 3.81mm pitch FCI part 20020004-D061B01LF

## Environmental Conditions

Operating temperature	-5 °C to +55 °C
Installation / pollution category	III / 2
Electromagnetic immunity	Electrostatic discharge Immunity to radiated fields Immunity to fast transients Immunity to impulse waves
	Level III (IEC 61000-4-2) Level III (IEC 61000-4-3) Level IV (IEC 61000-4-4) Level IV (IEC 61000-4-5)

## Communication and Data

4G	Pentaband
Antenna	External SMA
SIM	Internal (accredited partners)
Data volume (5 sec reports)	
Data volume (30 sec reports)	
All data and communications provided by Solar Analytics	

## Power Quality

Frequency measurement	45 to 65 Hz, 0.01 Hz
Voltage	50-300V, 0.1V

## Compliance Certificates

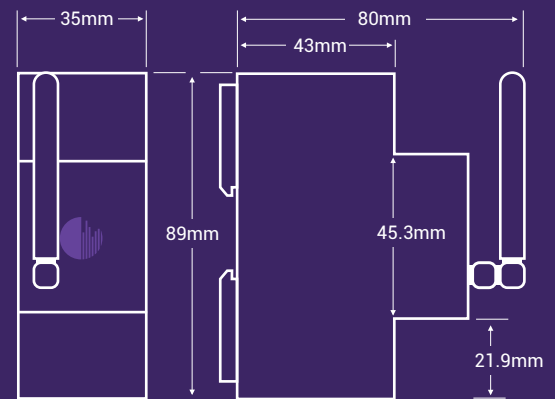
A-TICK	E5258
Safety	AS/NZ60950.1:2011
Conducted Emissions	AS/NZS CISPR 22:2009 ClassB
Radiated Spurious Emissions	AS/NZS 4268:2008 +A1:2010 C 8.2 & 9.1

NOTE: All specifications are preliminary only and may be subject to change.

# Dimensions

## Front

## Side



# Current Transformers

Must use provided current transformers (CTs).  
CTs can be recalibrated at installation.

## KR-63 60A

Standard device.  
Comes with 3 or 6 CTs, each 60A, 10mm diameter.



## KR-63 120A

Standard device.  
Comes with 3 or 6 CTs, each 120A, 16mm diameter.



## KR-63 200A

For larger systems.  
Comes with 3 or 6 CTs, each 200A, 25mm diameter.



## KR-63 400A

For larger systems.  
Comes with 3 or 6 CTs, each 400A, 25mm diameter.



## KR-63 600A

For larger systems.  
Comes with 3 or 6 CTs, each 600A, 35mm diameter.



solar  analytics

1300 651 137

www.solaranalytics.com

sales@solaranalytics.com