

Park construction

Dixon Street, Malvern

About the project

We're transforming 25 Dixon Street, Malvern into a park and creating much-needed green space the community can enjoy. The park construction follows demolition and clearing of the land at the corner of Dixon and Ray streets.

When finished the new park will feature a lawn area, garden beds, pathways and seating. Where possible trees have been retained and more will be planted.

We recognise works of this nature will cause some inconvenience. Every effort will be made to keep disruption to a minimum and we thank you in advance for your patience and understanding.



Works

- » New timber seating
- » New timber seating
- » Lawn area
- » Garden beds
- » Feature planting
- » Recycled brick edging
- » Pathway
- » Corten steel retaining wall



Contact

Contractor:

Landstruct Landscape Construction
Gary Bond
M: 0405 135 486

Emergency

(out of hours)
P: 8290 1333

City of Stonnington:

Project Manager
David McCarthy
M: 0427 246 313



Location

25 Dixon Street, Malvern



When

August to November 2024

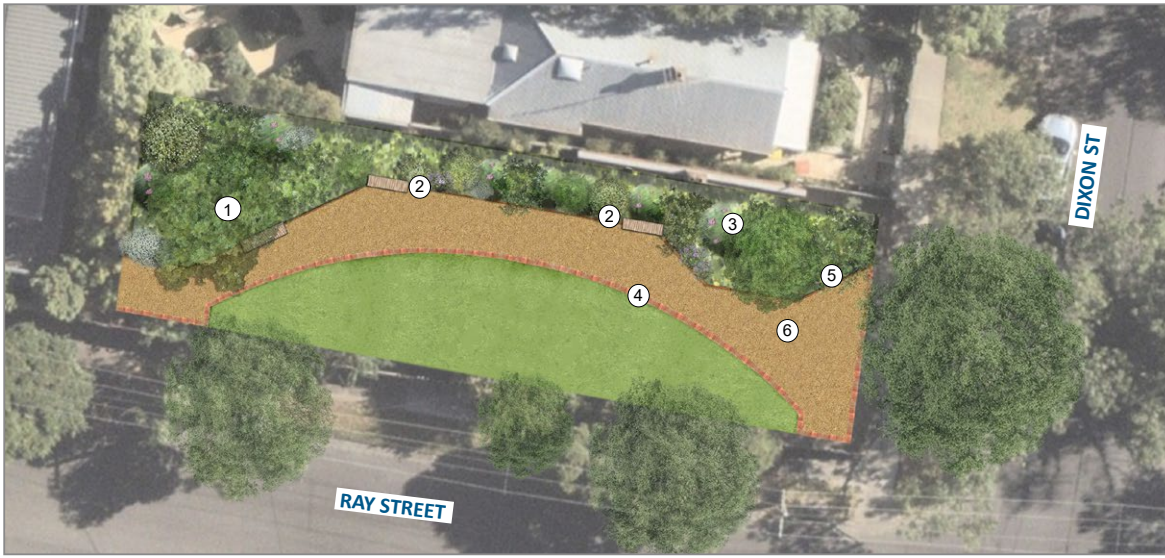
7am to 5pm (Monday to Friday)

8am to 3pm (Saturday)



Scan me or visit
stonnington.vic.gov.au/dixonstreetpark

PARK DESIGN



- ① EXISTING BOX ELDER TREE RETAINED
- ② NEW TIMBER SEATING
- ③ NEW GARDEN BED WITH FEATURE PLANTING
- ④ SALVAGED AND REINSTALLED EXISTING BRICK EDGING
- ⑤ CORTEN RETAINING WALL
- ⑥ GRANITIC PATH

MATERIAL PALLETTE (INDICATIVE)

FEATURE TIMBER SEATING



LUCULIA GRATISSIMA



PLECTRANTHUS PLEPALILA



EUONYMUS JAPONICUS



MICHELIA DOLTSOPA



SPIREA CANTONIENSIS



CORTEN STEEL



PLANTING PALLETTE (INDICATIVE)

SPIREA JAPONICA



MAGNOLIA GRANDIFLORA



DICHONDRA ARGENTEA



DAHLIA IMPERIALIS



CALODENDRUM CAPENSE



BRICK EDGING



WORK SITE RESTRICTIONS

In accordance with Worksafe and OH&S practices, parking and pedestrian access with the work site will be limited during working hours.

Please adhere to warning signs at all times



Scan me or visit
stonnington.vic.gov.au/dixonstreetpark